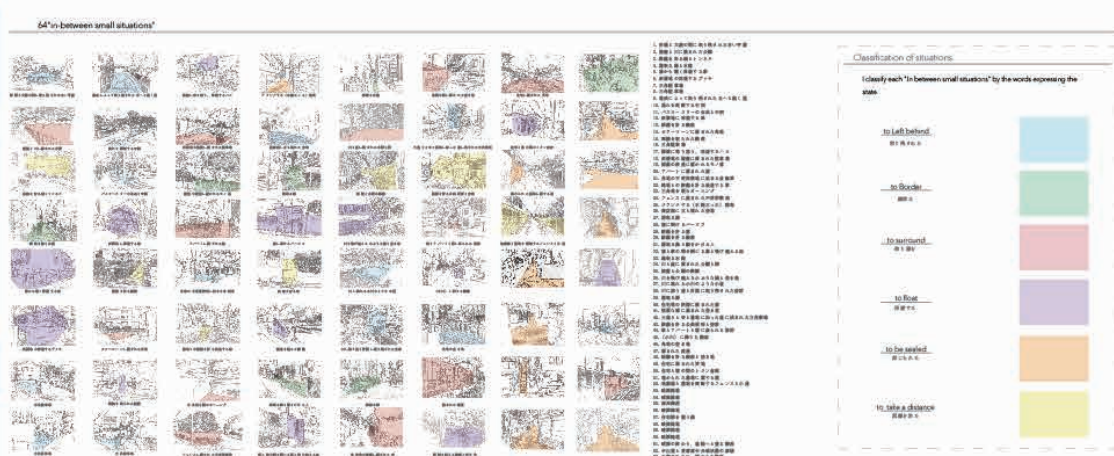


或る街の小さな際 - 不安定な都市の暴露とゆらぐ日常 -



Classification of situations

Classify each "in-between small situation" by the words expressing the state.

- to left behind
- to border
- to surround
- to float
- to be sealed
- to take a distance

to left behind: In many cases it is the case of a single left behind from the plan that appears when topographical factors and layers of different objects (planned, mark making). What caused by geometrical deviation. It is in a side left behind from both of conflicting elements.

to float: They appear when trying to exceed the topographic factor or to level difference in usability patterns. Many are spaces, over unnecessary spaces that appear under houses to be built. Among them, parking lots are sometimes floating in the upper part.

to border: There are many border spaces that appear timely between roads and houses. In many cases, they act as a buffer zone while waiting for a wall that secures parking. It seems to be quite something like appearing by separating corners on both sides from the site boundary.

to be sealed: Most of the pattern in the back space that was created by dividing the place above shows a flat wayway. In these places all factory houses are turning their backs and both sides are guarded by block fences. Although it is an attractive back alley, inevitably people do not pass them, and it is not used especially for anything.

to surround: In many cases, the place someone owns / manages prohibition of entering and garbage dumping. The approach is used as an effective means to avoid responsibility for various accidents that occur, but the attraction of "in-between small situation" is also decreasing.

to take a distance: In the aspect of Takinokawa, which is an element that connects one class with another location, the position of those elements often indicates the contour lines of the ground. In addition to the elements that measure such physical distances, there are not only physical distance but a spatial distance.

"in-between small situations" in Takinokawa



Haruki Murakami and "in-between small situations"

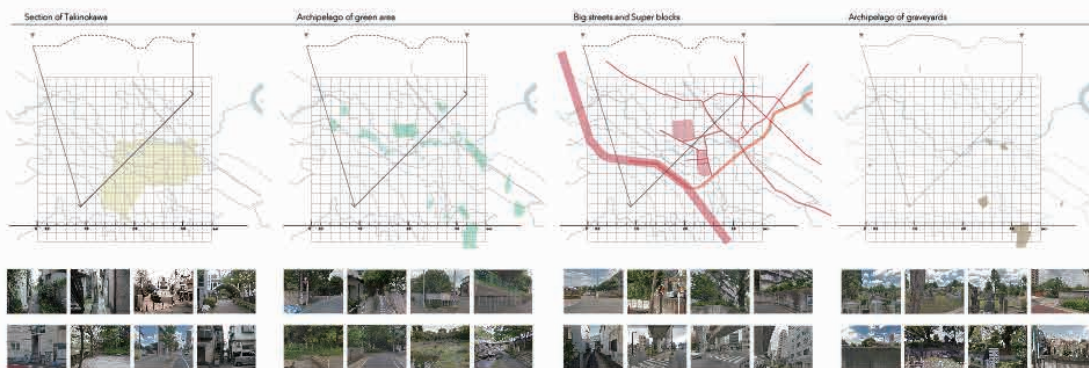
Although it is a bit far from here, I still think about the book 'In-between small situations'. The book by Haruki Murakami, "In-between small situations" appears. Although the number is small, the best appeared as a subject with structure and description, and it is a very good development. As Murakami found a kind of high energy during the period of high growth, it was reflected in the real engineering structure based on "urban planning" had a sense of reciprocity with nature and people's lives and had a sense of responsibility.

For example, in "Small Shop Street", the hero who returned to the town "will continue to be an angry body inside the border left in the future condition. However, there are beautiful and high-rise apartment buildings in front of the sea, which is the best. The hero who is not a part of the real business, but he is the best. From a sense of a book, it is a very good book.

Both of them, they are empty with common sense and experience. In the future, it will be a book that will be the best and the present, and it is a book that will be the best. And they always play an important role to support the structure and development of the city in the present half of "in-between small situations".

"In-between small situations" is a highly readable process in which the author describes the structure and details, even if it is a simple object for "urban planning". In other words, it is "between" the structure and the world "between".

Murakami actually describes the source of "in-between small situations".



Each location and Noise supply factor, Reason for noise generation

Noise supply factor	Reason for noise generation		
	Location	Space	Impediment
Natural objects	to left behind	to be sealed	to left behind
Civil engineering structures	to left behind	to float	to take a distance
Private property	to left behind	to surround	to be sealed
Cultural property	to surround	to border	to take a distance

Selected sites and elements on both sides

Element	Image	Diagram	Category
1	Image of a narrow alley	Diagram showing a narrow alley	to left behind
2	Image of a small courtyard	Diagram showing a small courtyard	to float
3	Image of a building facade	Diagram showing a building facade	to border
4	Image of a street view	Diagram showing a street view	to be sealed
5	Image of a street view	Diagram showing a street view	to surround
6	Image of a street view	Diagram showing a street view	to take a distance
7	Image of a street view	Diagram showing a street view	to left behind
8	Image of a street view	Diagram showing a street view	to float
9	Image of a street view	Diagram showing a street view	to border
10	Image of a street view	Diagram showing a street view	to be sealed
11	Image of a street view	Diagram showing a street view	to surround
12	Image of a street view	Diagram showing a street view	to take a distance

1 The Office Worker's Gym 01
2 The Office Worker's Gym 02
3 The Office Worker's Gym 03
4 The Office Worker's Gym 04
5 The Office Worker's Gym 05
6 The Office Worker's Gym 06
7 The Office Worker's Gym 07
8 The Office Worker's Gym 08
9 The Office Worker's Gym 09
10 The Office Worker's Gym 10
11 The Office Worker's Gym 11
12 The Office Worker's Gym 12

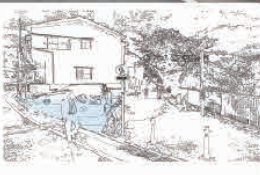
01 The Office Worker's Gym
02 The Office Worker's Gym
03 The Office Worker's Gym
04 The Office Worker's Gym
05 The Office Worker's Gym
06 The Office Worker's Gym
07 The Office Worker's Gym
08 The Office Worker's Gym
09 The Office Worker's Gym
10 The Office Worker's Gym
11 The Office Worker's Gym
12 The Office Worker's Gym



Case 1

「オープンの」住宅コミュニティの計画
 the "Open White" Community Plan
 出合いの建築環境と建築との積極的関わりによって、新しい住宅コミュニティのあり方を模索する。そこには必ずしも開かれた空間は必要ない。

この建築では、建築師にも参加してもらっていろいろな意見を出して大議論をした。その中で決まってきたことは、この建築は「開かれた」空間であること、そして、その空間が「開かれた」空間であること、そして、その空間が「開かれた」空間であること。



Case 2

「開かれた」住宅コミュニティの計画
 the "Open White" Community Plan
 この建築は、オープンの住宅コミュニティの計画である。その中で決まってきたことは、この建築は「開かれた」空間であること、そして、その空間が「開かれた」空間であること、そして、その空間が「開かれた」空間であること。



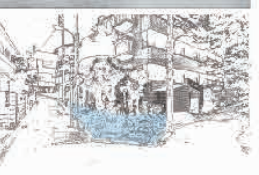
Case 3

「開かれた」住宅コミュニティの計画
 the "Open White" Community Plan
 この建築は、オープンの住宅コミュニティの計画である。その中で決まってきたことは、この建築は「開かれた」空間であること、そして、その空間が「開かれた」空間であること、そして、その空間が「開かれた」空間であること。



Case 4

「開かれた」住宅コミュニティの計画
 the "Open White" Community Plan
 この建築は、オープンの住宅コミュニティの計画である。その中で決まってきたことは、この建築は「開かれた」空間であること、そして、その空間が「開かれた」空間であること、そして、その空間が「開かれた」空間であること。



the Parking Lot for the Personal Car

Parameters to choose on the site

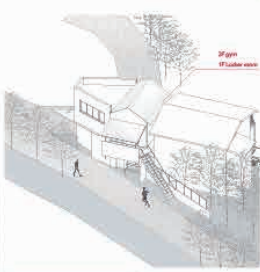
- Program: Parking
- Structure: Parking
- Material: Parking

People's traffic happens in the daily lives of people

Margin which we can use as a chess table

01 The margin with design

02 The margin with design



Triangle at the Edge of Street

Parameters to choose on the site

- Program: Parking
- Structure: Parking
- Material: Parking

Then it is transformed into a place to protect the memory of the people who lived in this place. The center becomes the observance.



the Unseen Property Plot

Parameters to choose on the site

- Program: Parking
- Structure: Parking
- Material: Parking

Libraries and handover these traces of people remain

Then it is transformed into a place to protect the memory of the people who lived in this place. The center becomes the observance.



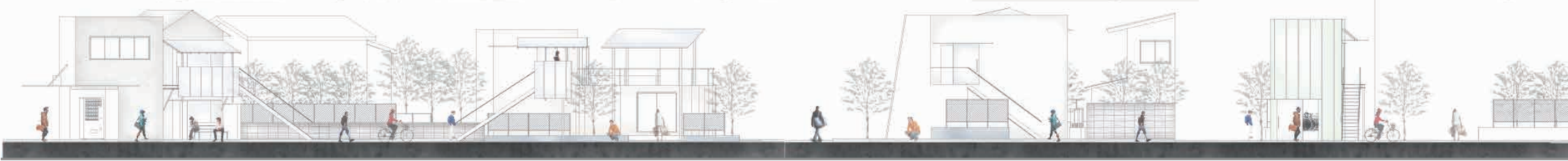
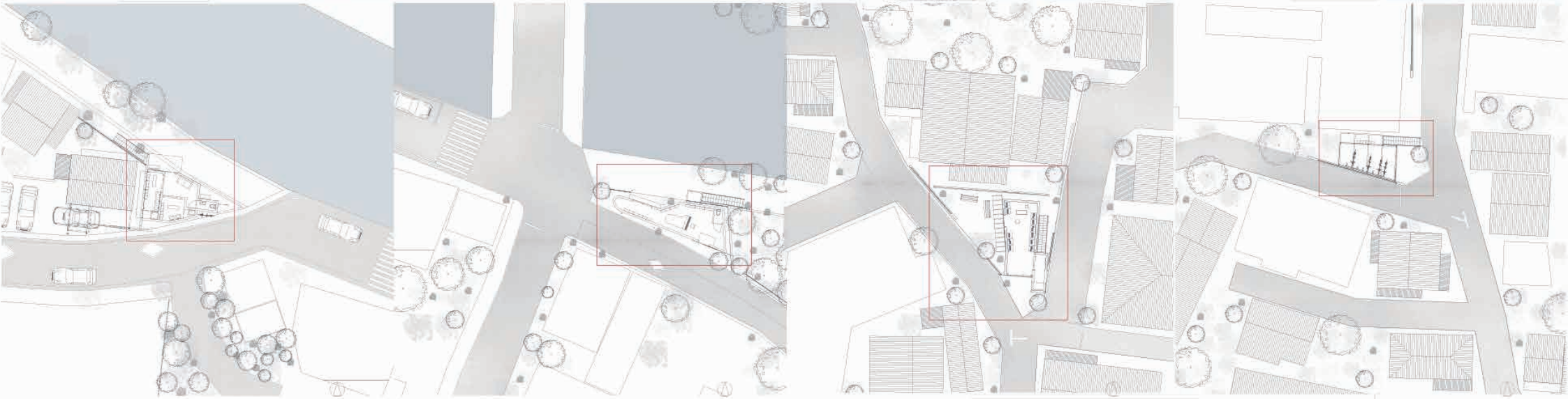
the form of apartment in front of bicycles

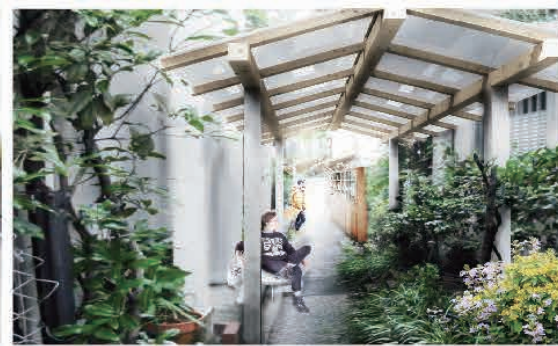
Parameters to choose on the site

- Program: Parking
- Structure: Parking
- Material: Parking

Library and bicycle residence

Then it is transformed into a place to protect the memory of the people who lived in this place. The center becomes the observance.

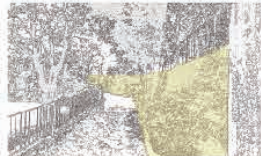




ケース9
The gallery terrace
The gallery terrace is a space for children to play and learn. It is a place where children can play and learn together. The gallery terrace is a space for children to play and learn. It is a place where children can play and learn together.



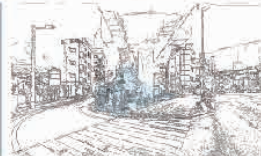
ケース10
The distance overlooking the river and park
The distance overlooking the river and park is a space for children to play and learn. It is a place where children can play and learn together. The distance overlooking the river and park is a space for children to play and learn. It is a place where children can play and learn together.



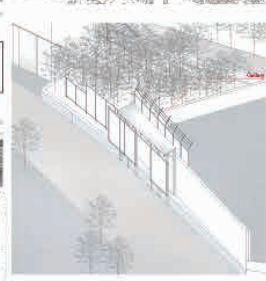
ケース11
The Culture and Coloring Book space
The Culture and Coloring Book space is a space for children to play and learn. It is a place where children can play and learn together. The Culture and Coloring Book space is a space for children to play and learn. It is a place where children can play and learn together.



ケース12
The bridge over the river
The bridge over the river is a space for children to play and learn. It is a place where children can play and learn together. The bridge over the river is a space for children to play and learn. It is a place where children can play and learn together.



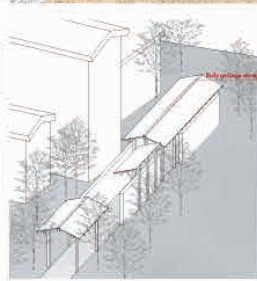
Management of the well with border of the garbage
Management of the well with border of the garbage is a space for children to play and learn. It is a place where children can play and learn together. Management of the well with border of the garbage is a space for children to play and learn. It is a place where children can play and learn together.



Element to choose as the site
Element to choose as the site is a space for children to play and learn. It is a place where children can play and learn together. Element to choose as the site is a space for children to play and learn. It is a place where children can play and learn together.



The Culture and Coloring Book space
The Culture and Coloring Book space is a space for children to play and learn. It is a place where children can play and learn together. The Culture and Coloring Book space is a space for children to play and learn. It is a place where children can play and learn together.



The bridge over the river
The bridge over the river is a space for children to play and learn. It is a place where children can play and learn together. The bridge over the river is a space for children to play and learn. It is a place where children can play and learn together.

