

# タイ

the Kingdom of Thailand



人口増加に伴い大都市圏の住宅は、横並びの形態から縦並びのユニットへと変容しつつあります。そんな中、バンコクの都市部では、公害、粉塵、高層ビルのコンクリート表壁が環境問題として深刻化しています。こうした現象に一矢を報いる意味で、マンション分譲オフィスの建物を丸ごと包む緑のファサードを紹介します。縦にすっと伸びる清々しい緑が、周辺のビルや建造物の固い表壁からこのオフィスを際立って見せています。

In metropolitan, housing is transforming from horizontal community to vertical units as population increases. In Bangkok, the urban environment suffers from pollution, dust and increasing concrete surfaces from highrises. To rebel against such phenomena, we introduced green façade, wrapping around a condominium sales office. The vertical greenery also distinguishes this sales office from the surrounding solid buildings and structures.



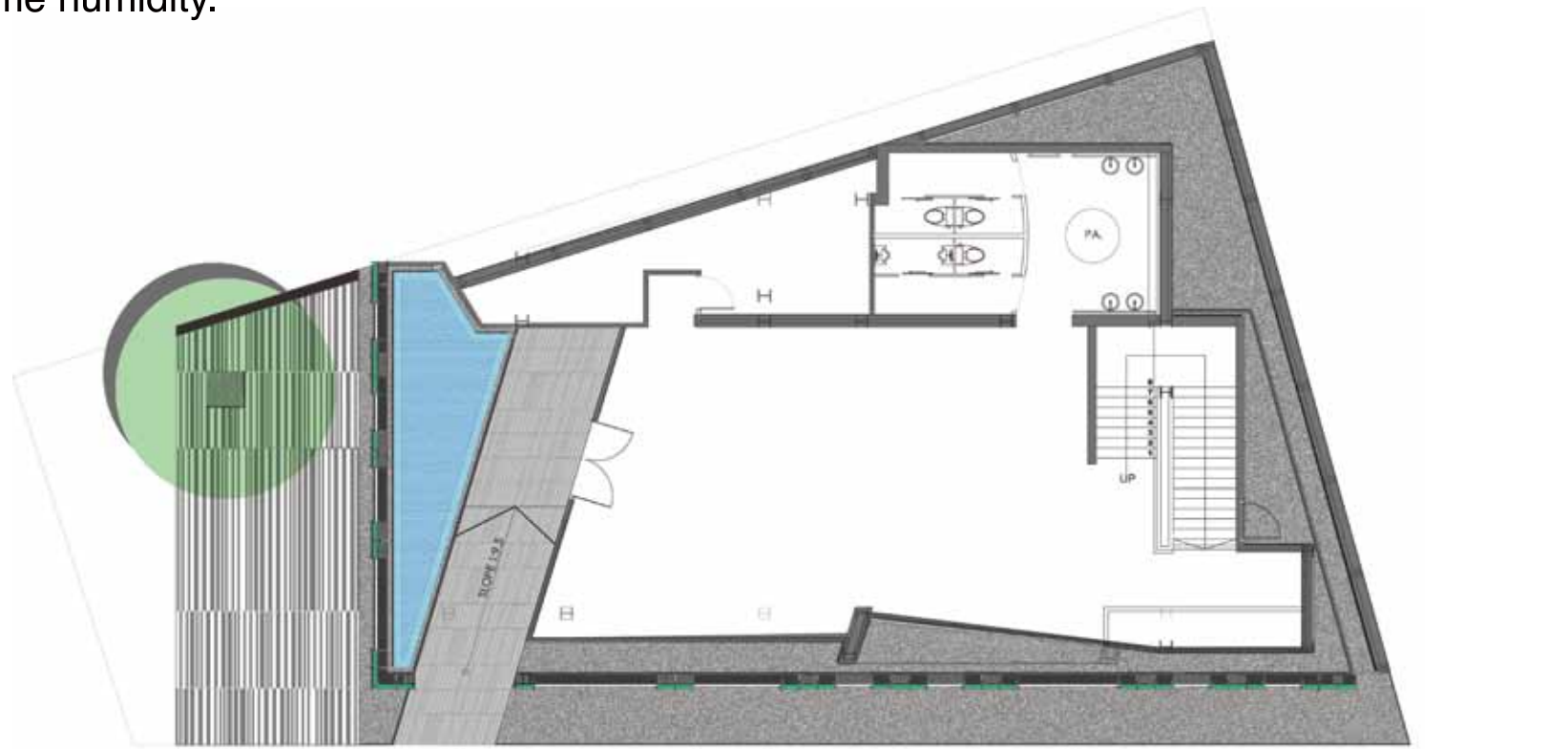
Shma Co, Ltd



Bangkok Living



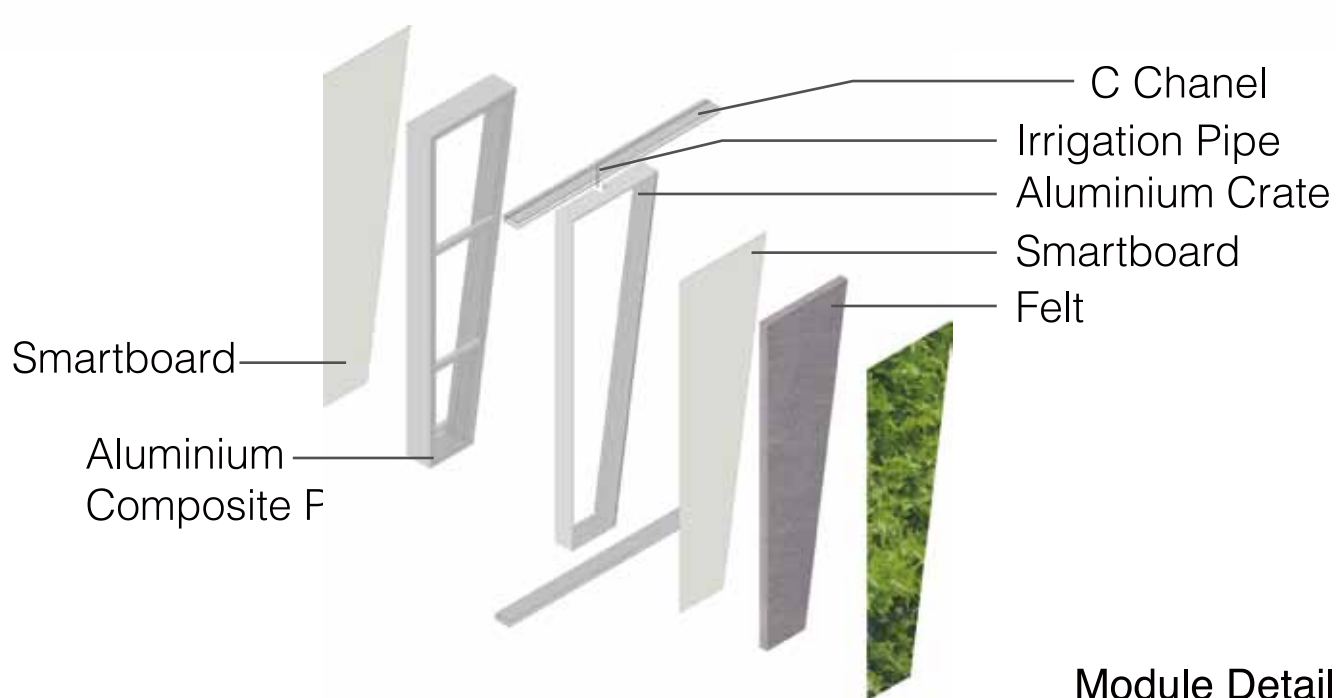
The facade helps to create tranquility to typical urban condominium and implants the new definition of urban living. Beyond its aesthetic, the envelope helped to reduce heat and glare for the occupant, while allowing sufficient natural light to shine into the interior. The module green crate is a ready made aluminum composite box for easy attachment to steel structure. Planting pouch and drip irrigation are installed within the felt for simple maintenance. Tokyo Dwarf was selected as it can endure Bangkok's pollution and grow well under extreme humidity.



Plan



Section



Module Detail

