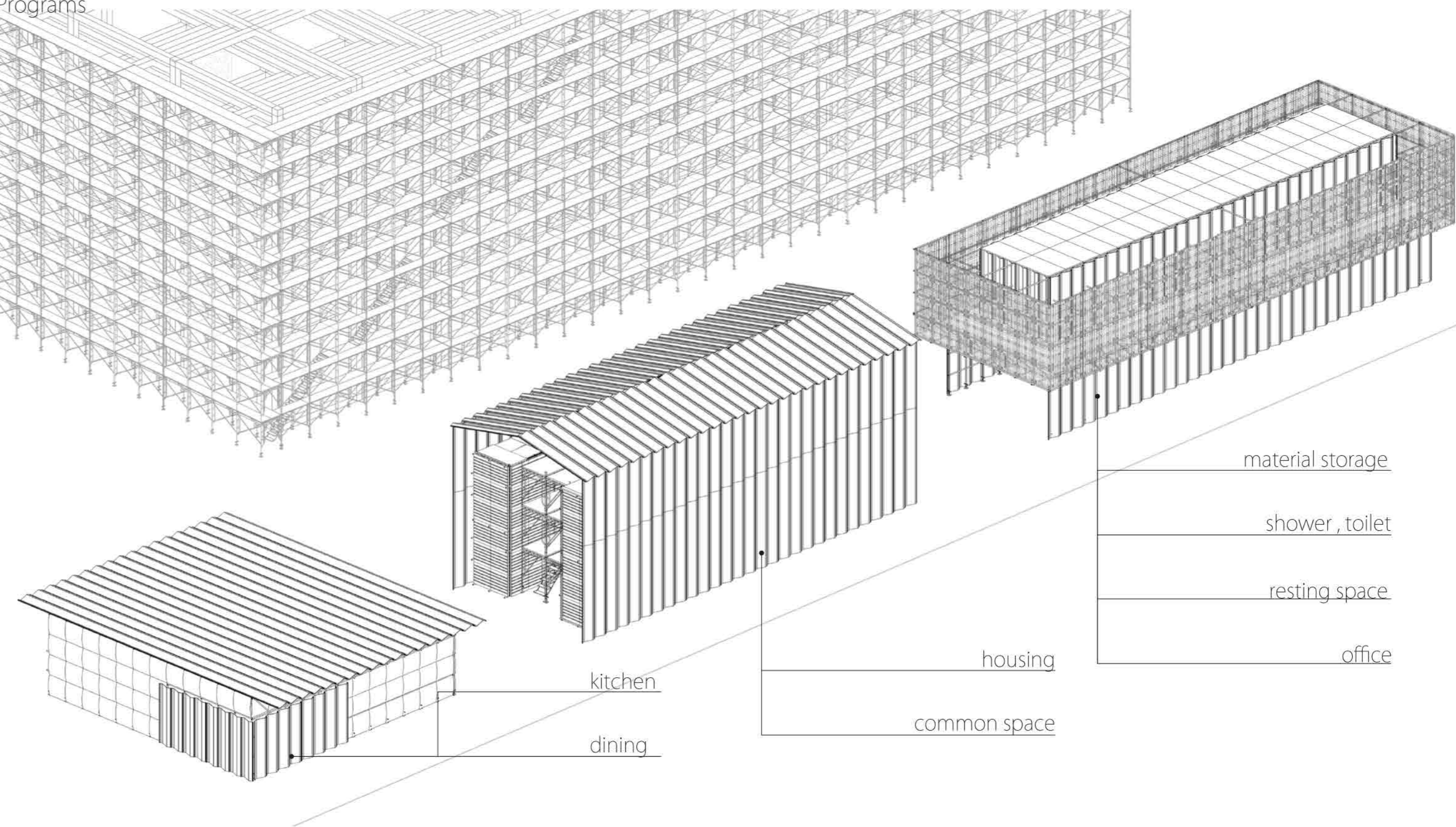


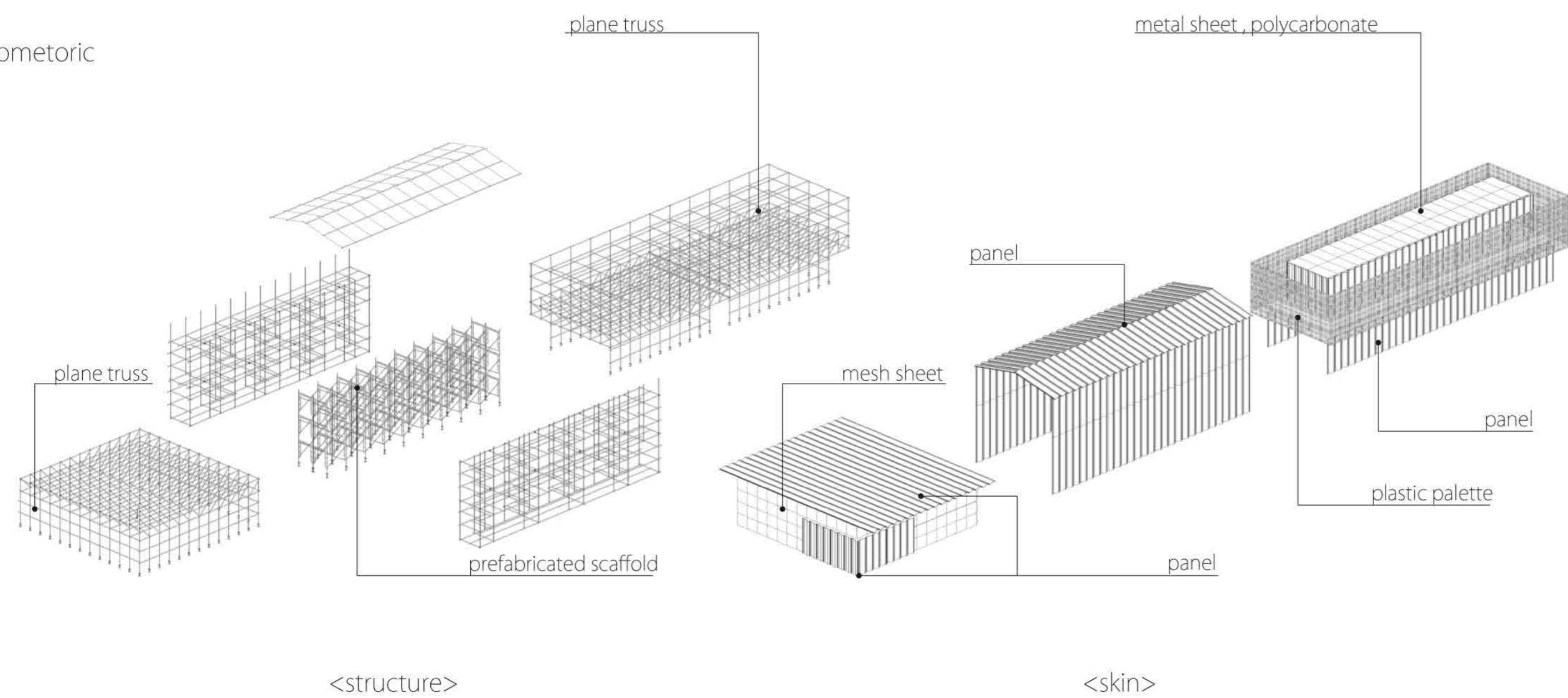


Programs

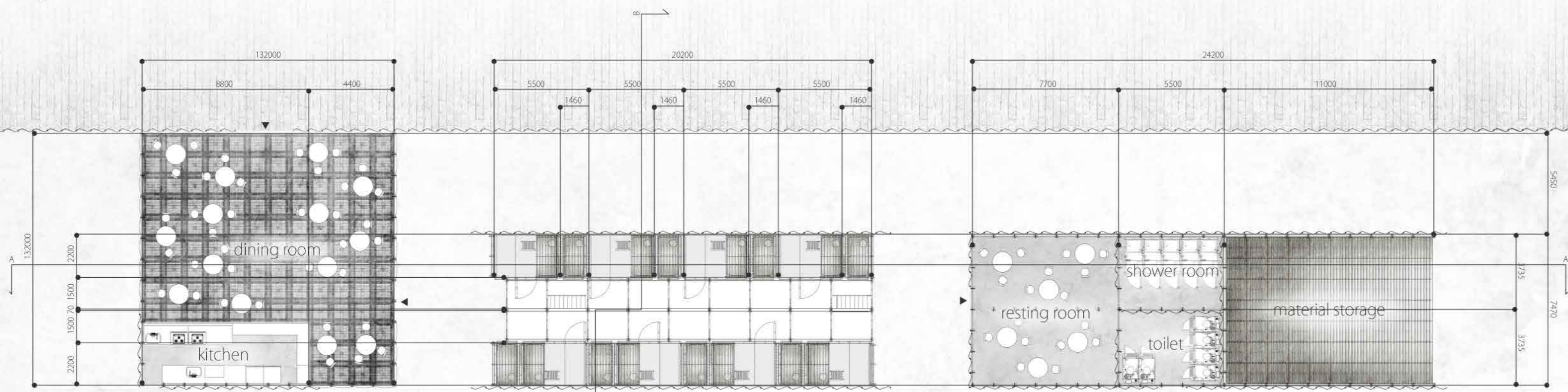


'GER' for slumdweller in constructionsite

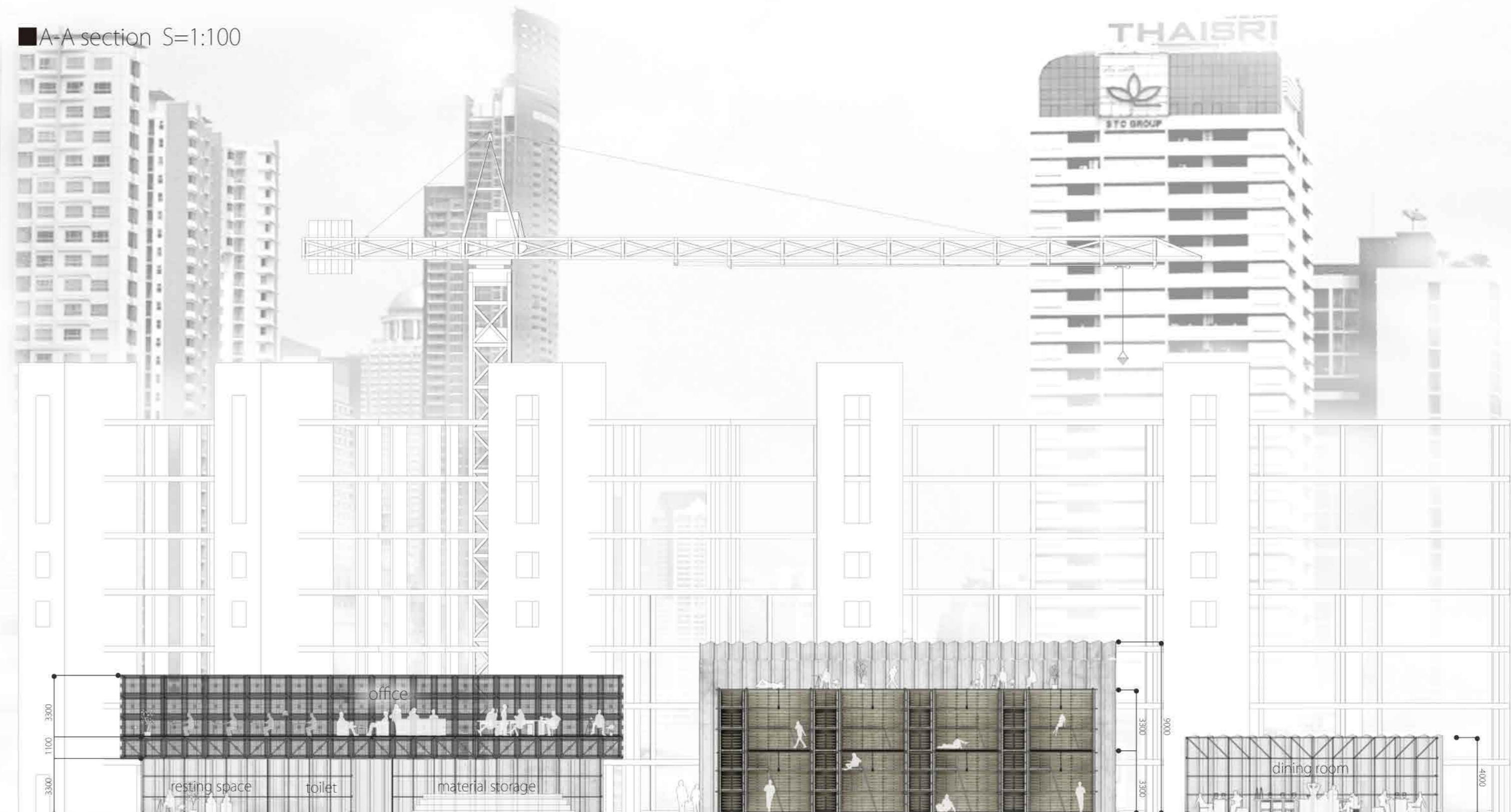
isometric



ground floor plan S=1:100



A-A section S=1:100



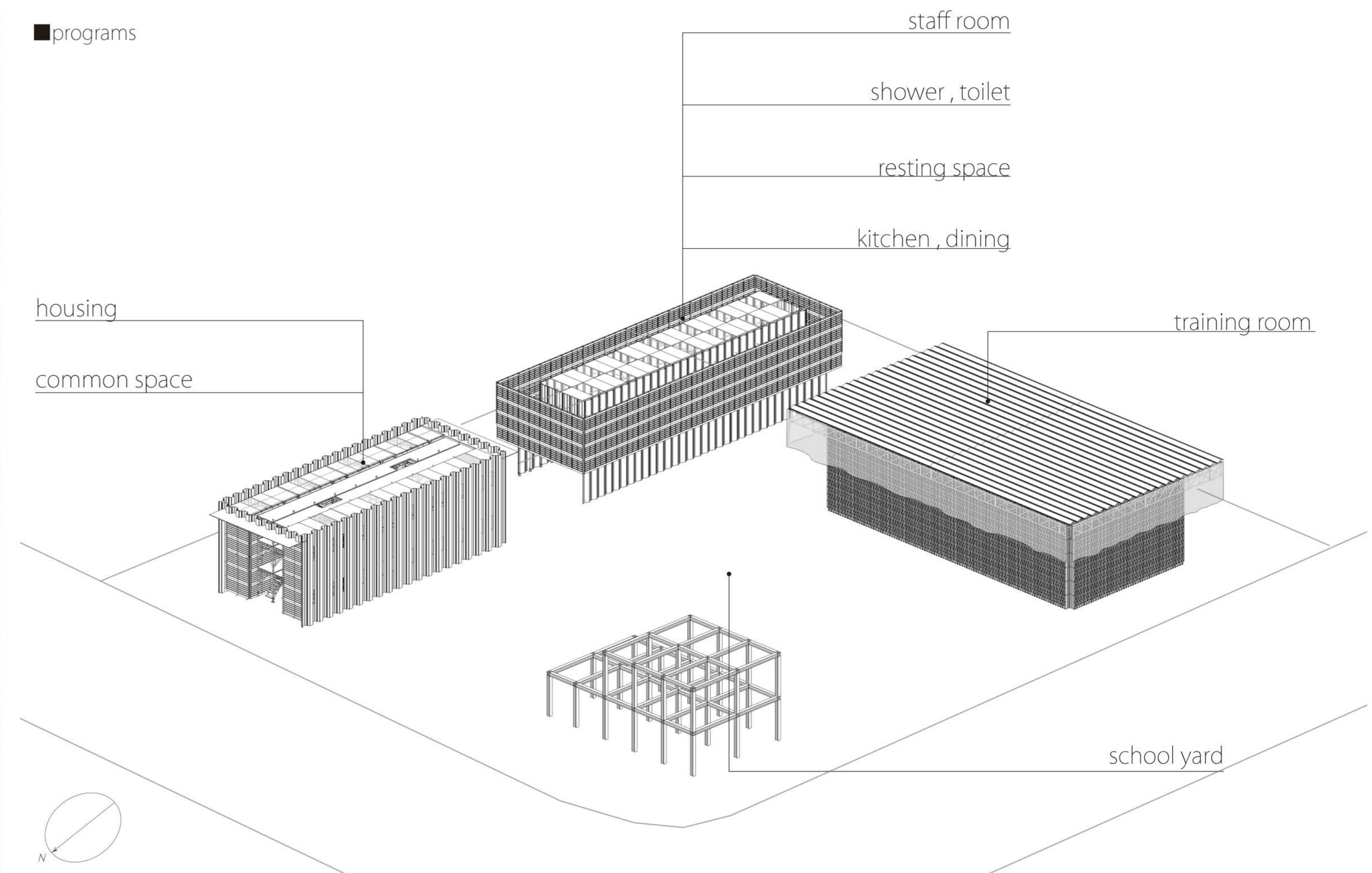
B-B section S=1:100



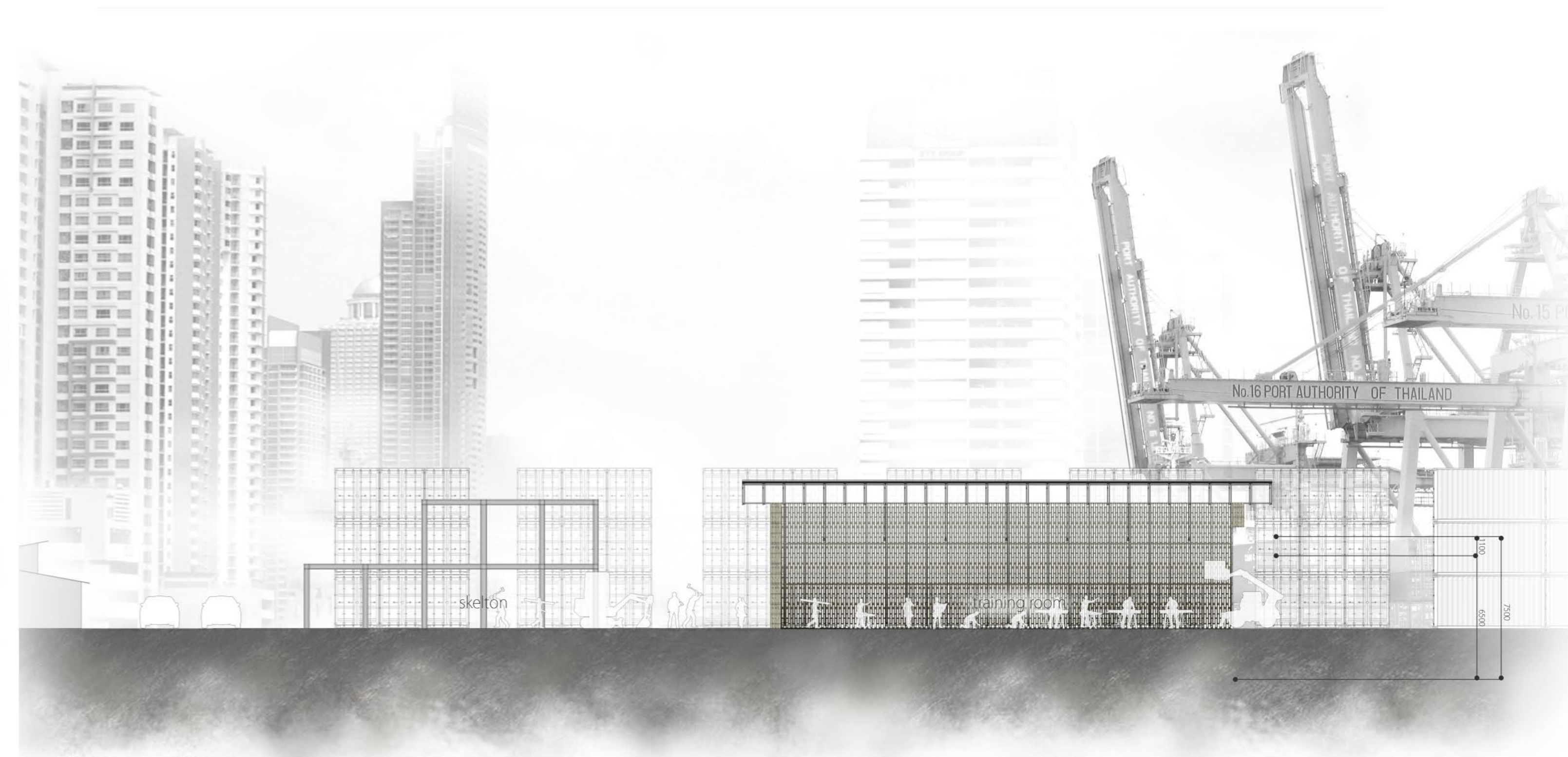


Engineering workers school for slumdweller in bangkokport

■ programs

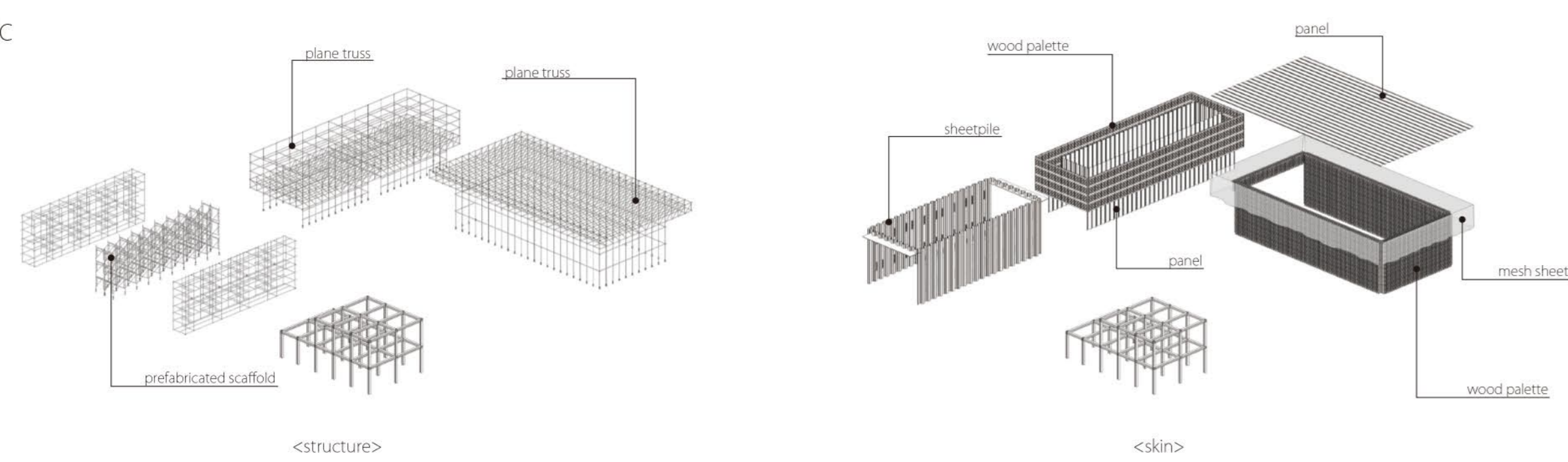


■ X-X section S=1:100

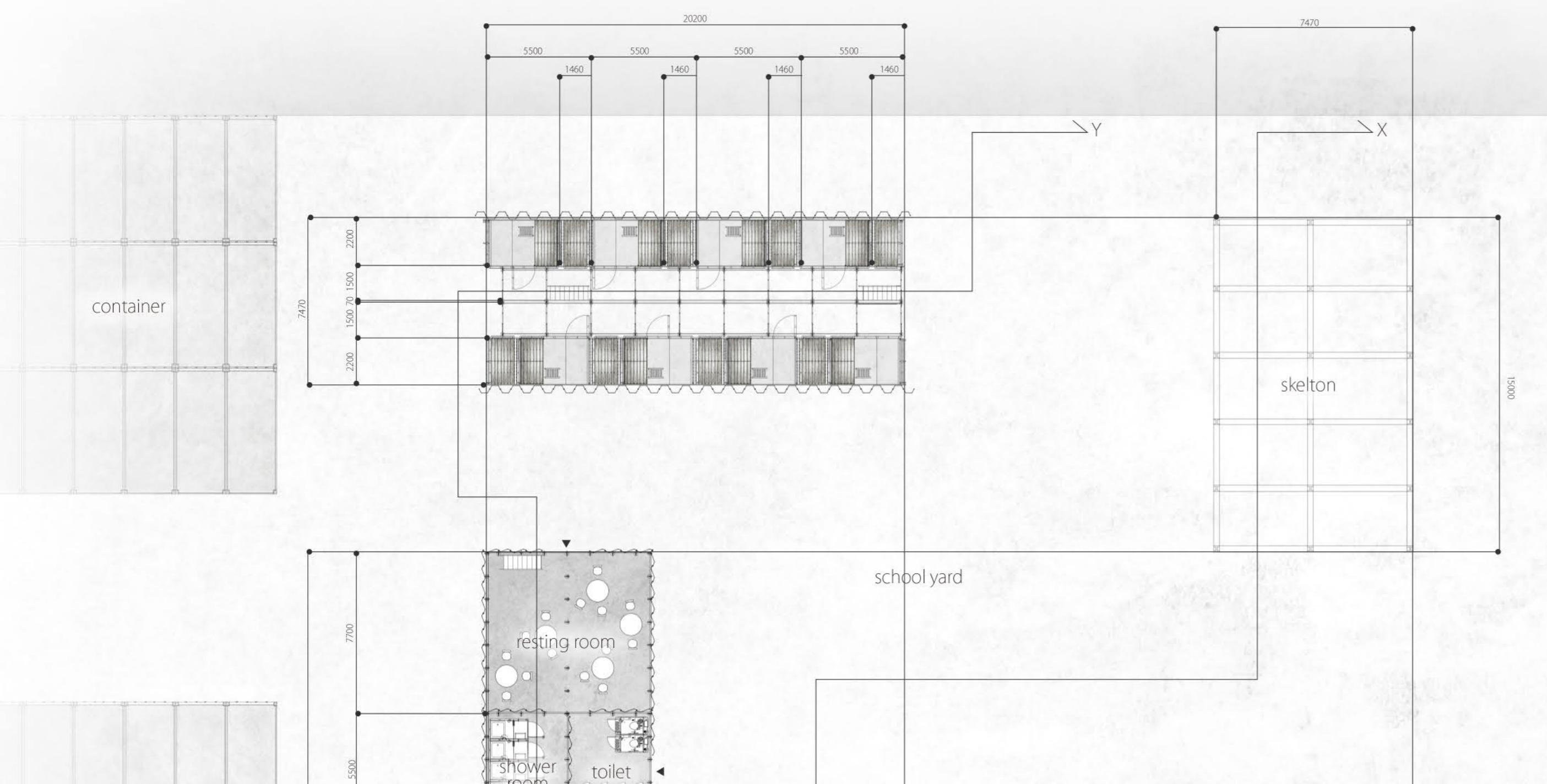


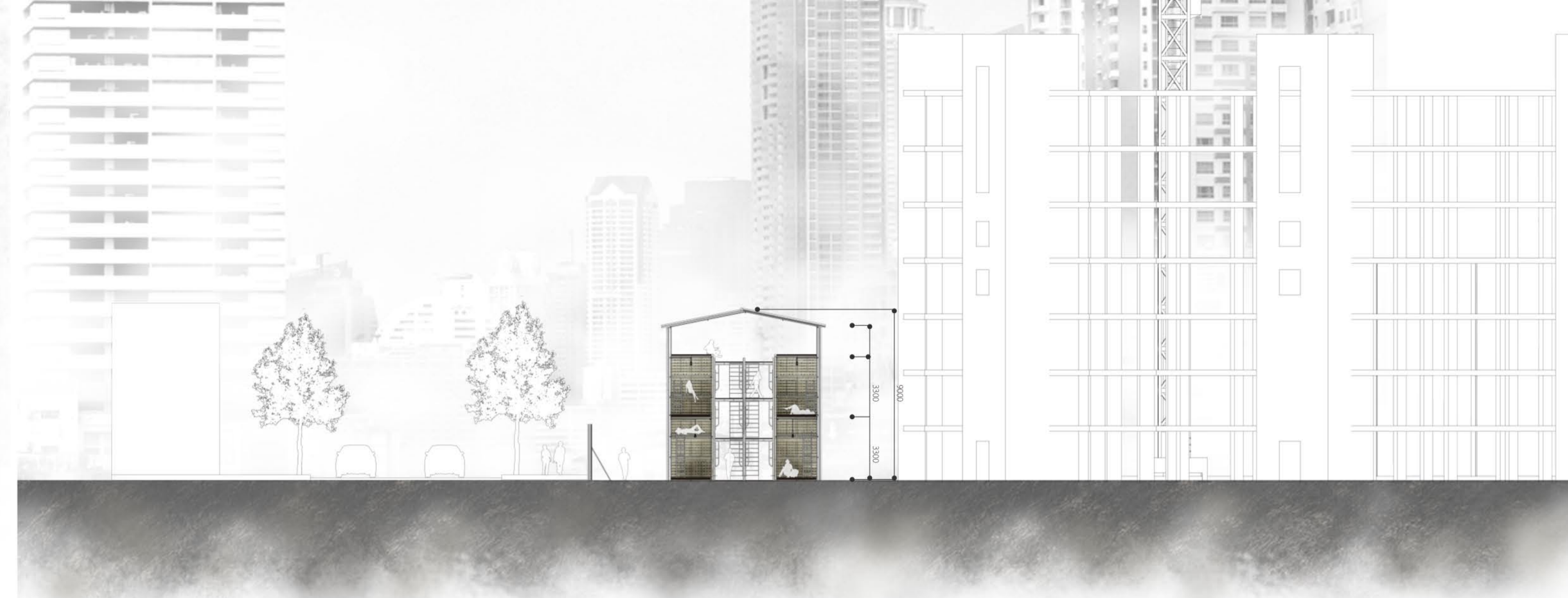
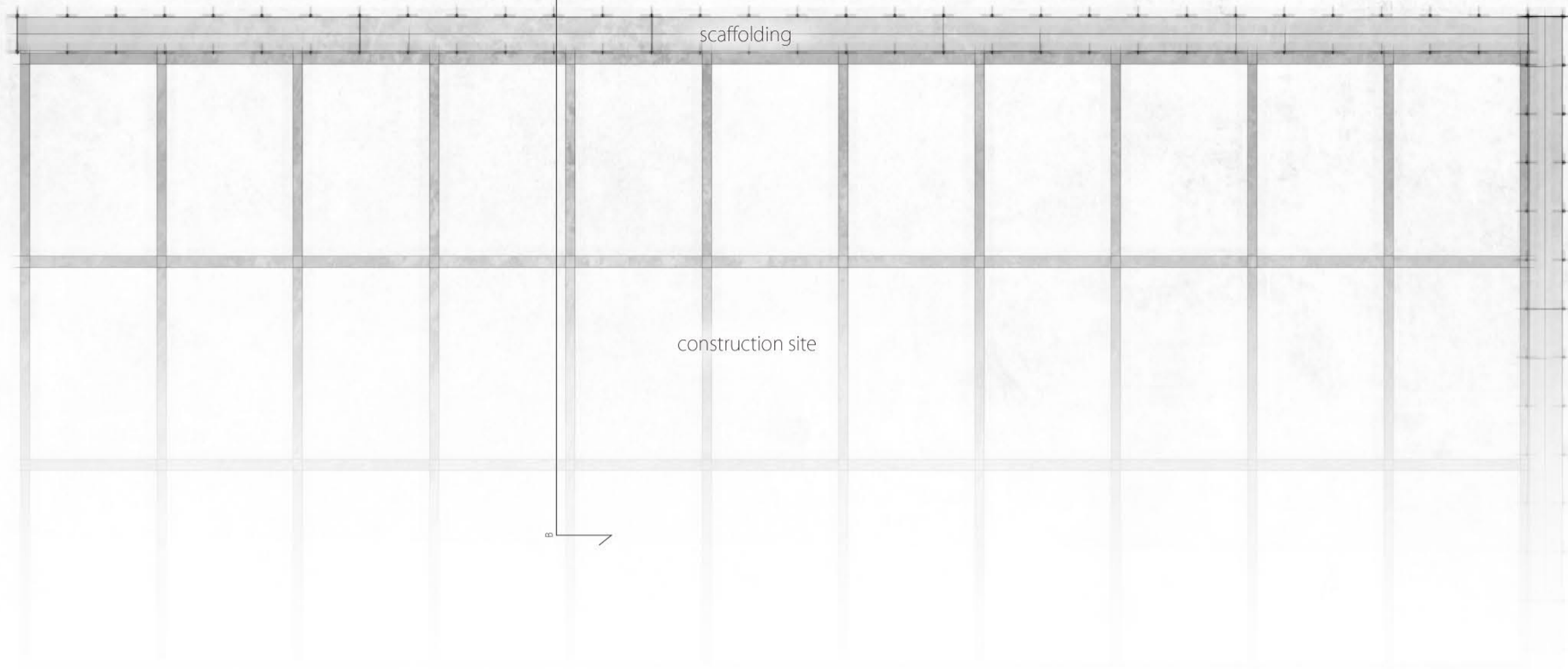
■ Y-Y section S=1:100

■ isometric



■ ground floor plan S=1:100





the space between double skins (plastic palette & flat panel)



birds eye view of the site



view to the dining from street



common space between housings



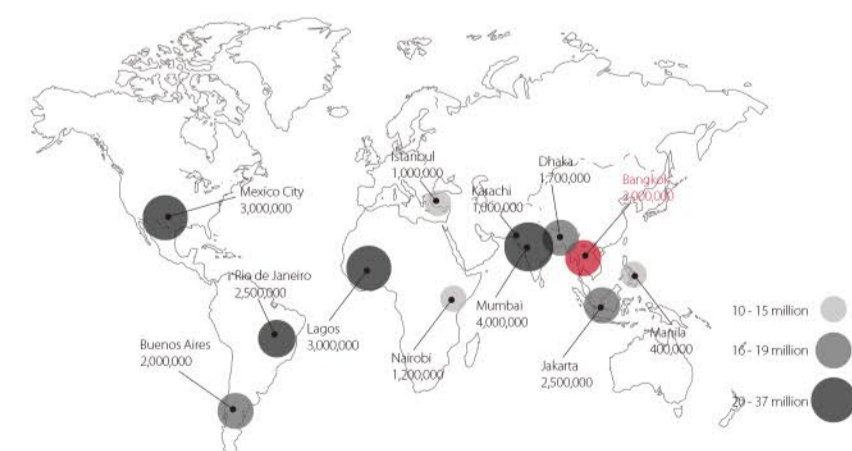
アジアの発展途上国では、経済成長の裏でたくさんのスラムが形成され、政府はスラム改善のため多様な政策を行ってきた。地権問題や住民の雇用問題によって、ほとんどの政策は失敗に終わっている。本研究では、これらの状況を踏まえてバンコクのクロントイスラムを対象にケーススタディを行いスラム更新の新しい手法を提案する。そこで、タイの建設労働者が現場に住み込みながら働くことに着目し、スラム住民を建設労働者として、遊牧民のように職住一体で建設現場を転々とし合法的なスラムを形成し自立するまでの間住まわせるという新しいスラム更新手法を提案する。そこで、

1. バンコク港における建設労働者学校
2. 建設現場におけるスラム住民のためのゲル

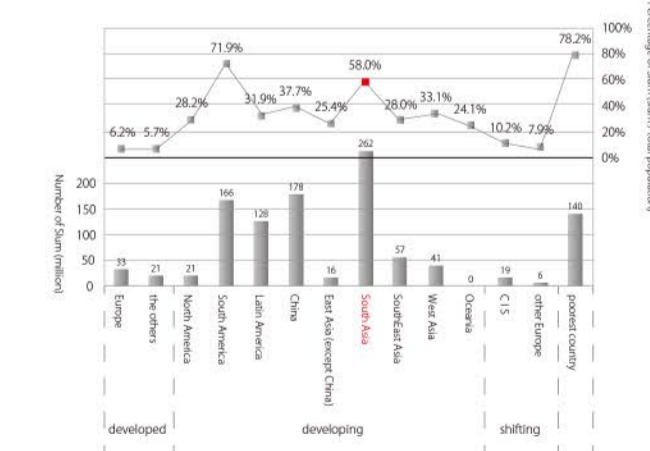
をセルフビルドシステムで仮設建築として作ることを提案する。建設現場でリースされているもの、クロントイスラムのとなり位置するバンコク港で捨てられているパレットをマテリアルとして設計する。

### ■ general information about slum

<distribution map of Slum>



<Population of Slum / 2003>



<typology of slum policy, social housing>

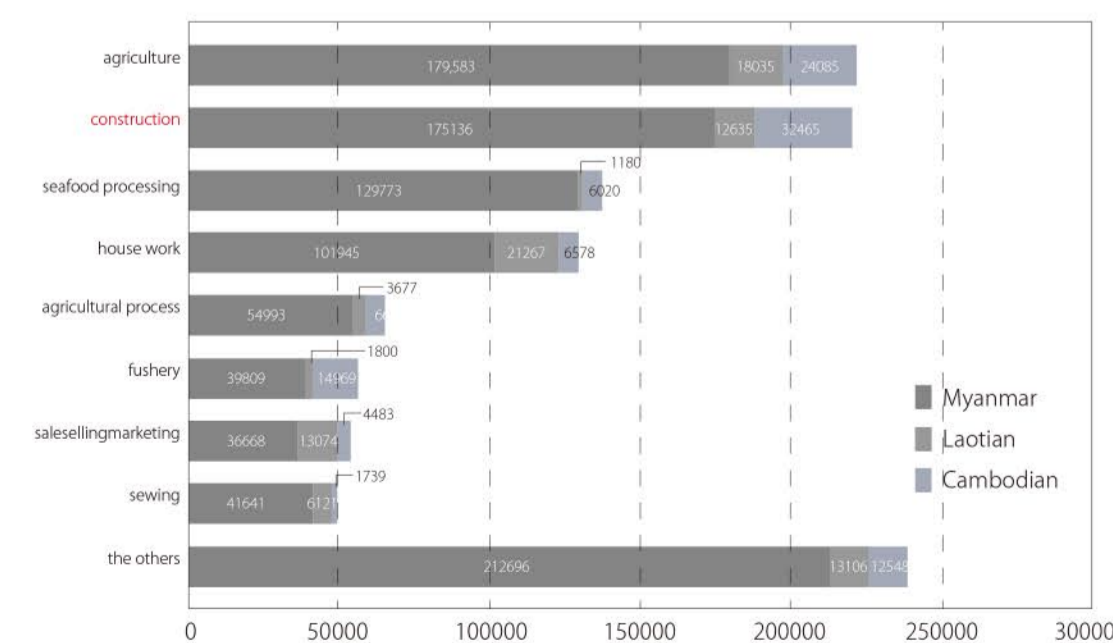
typology of slum policy		project area	
social housing		change to another site	change to suburb
implementing body	public	slum clearance	public housing
	NPO inhabitant	slum redevelopment	slum redevelopment
		Land Sharing	site and services
private enterprise	slum upgrading	microfinance	slum redevelopment
			affordable housing

<What is Landsharing?>

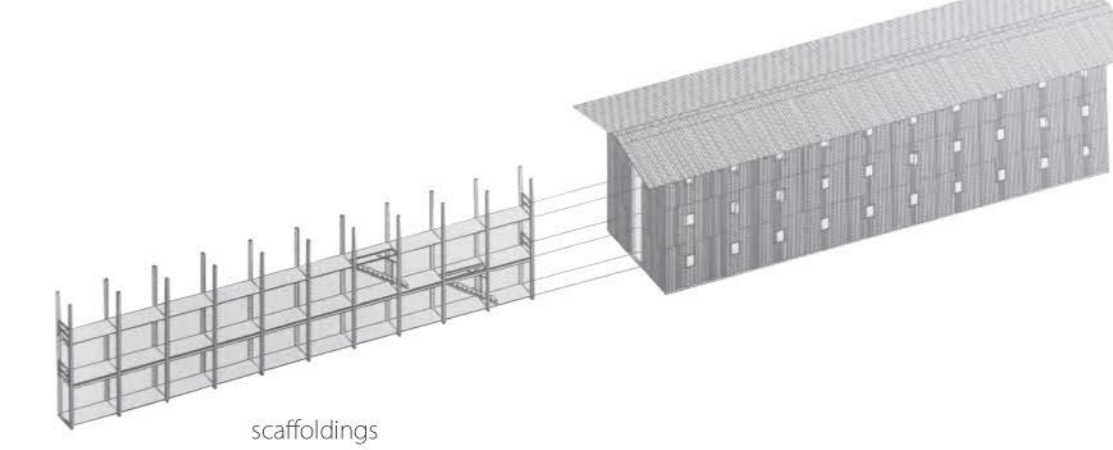


### ■ the state of construction worker in Bangkok, Thailand

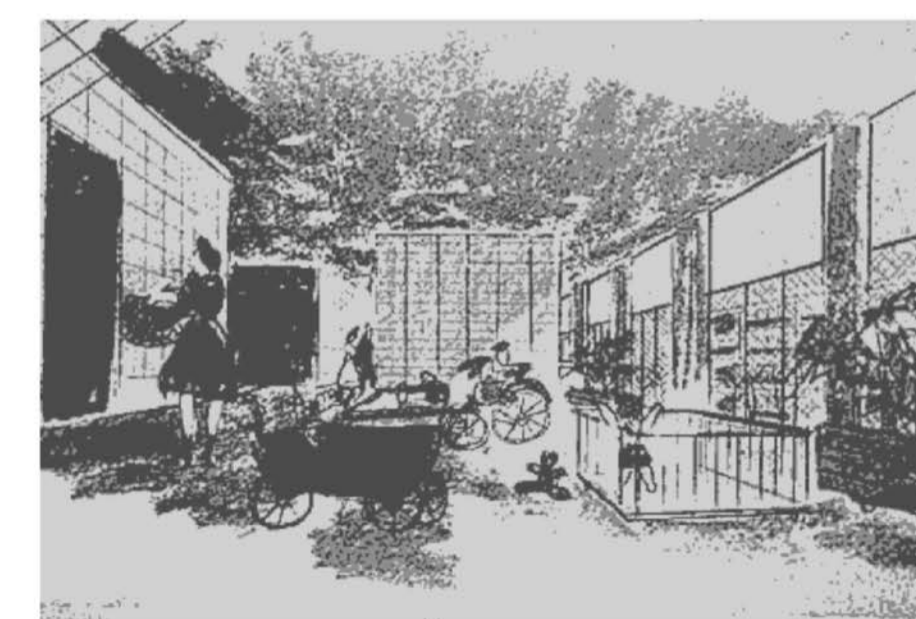
<the population of foreign worker in Thailand>



<temporary housing for construction worker>



### ■ Pruitt-Igoe / Minoru Yamasaki : This project is famous as the biggest failure in residential planning.



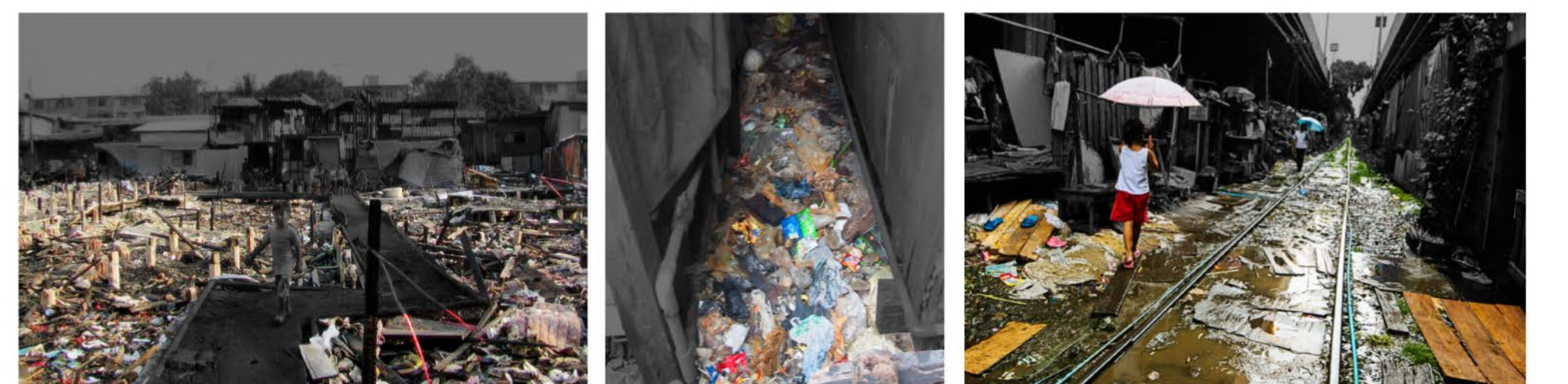
concept sketch of common space

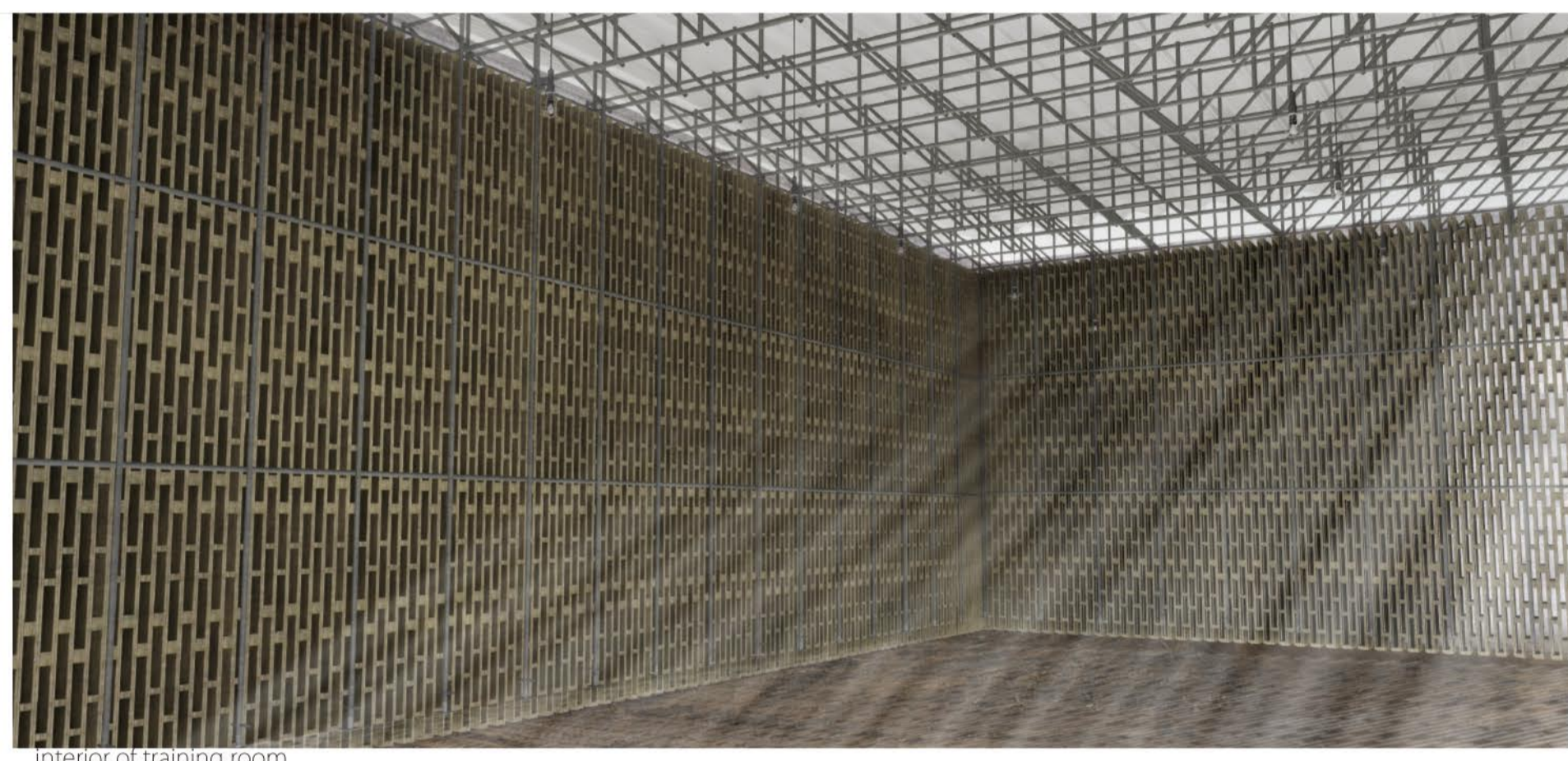
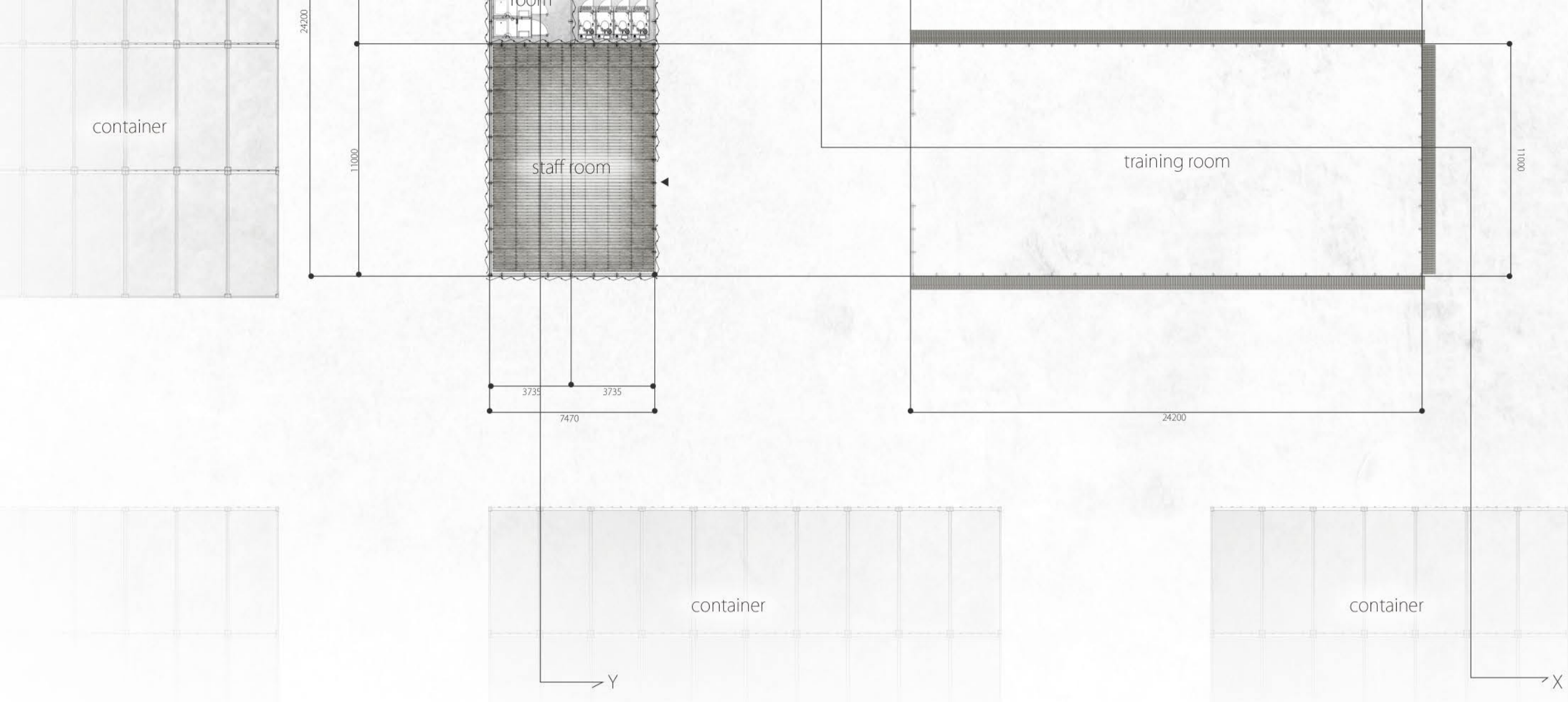


view of common space

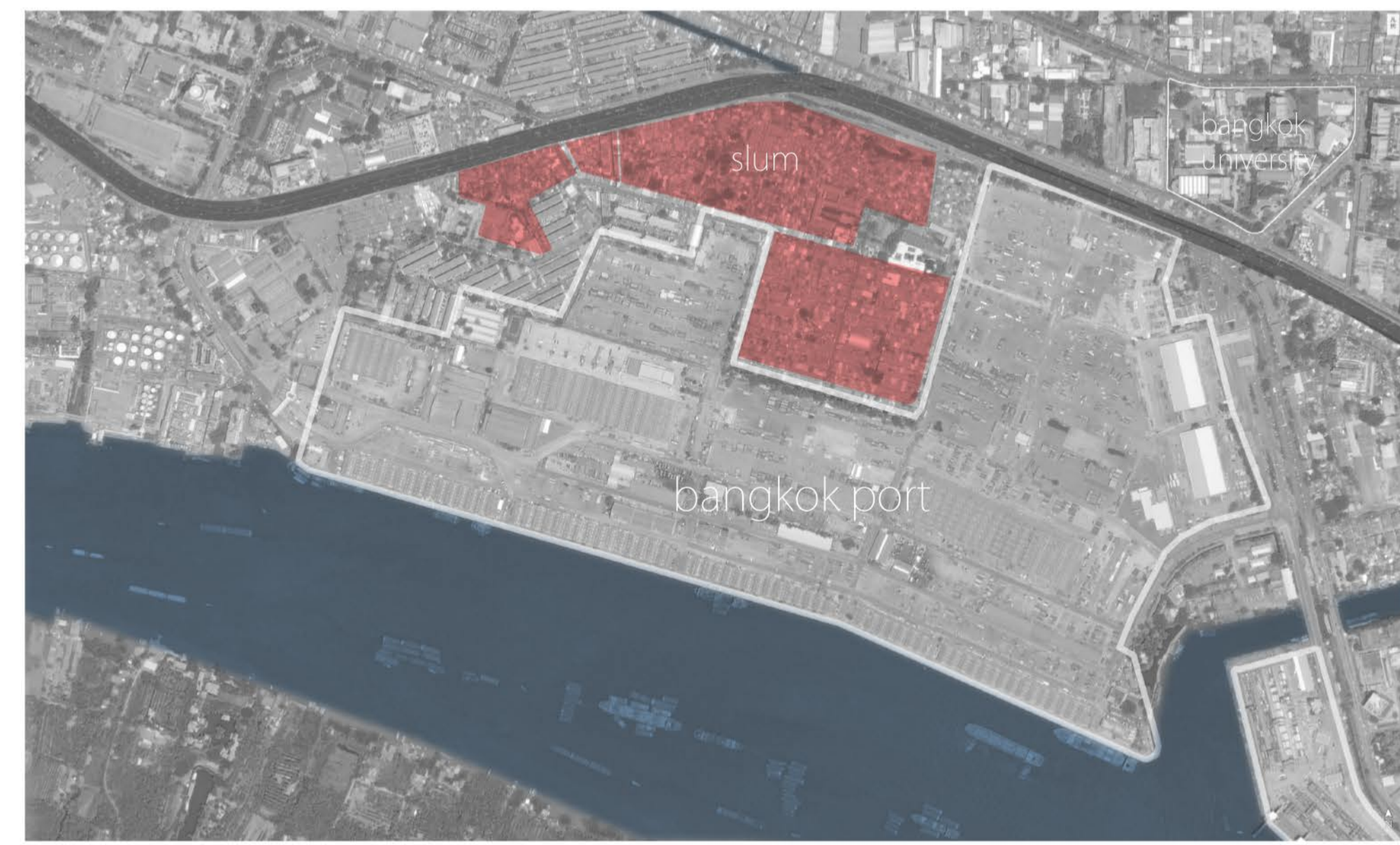


### ■ the state of Klongtoey slum in Bangkok, Thailand

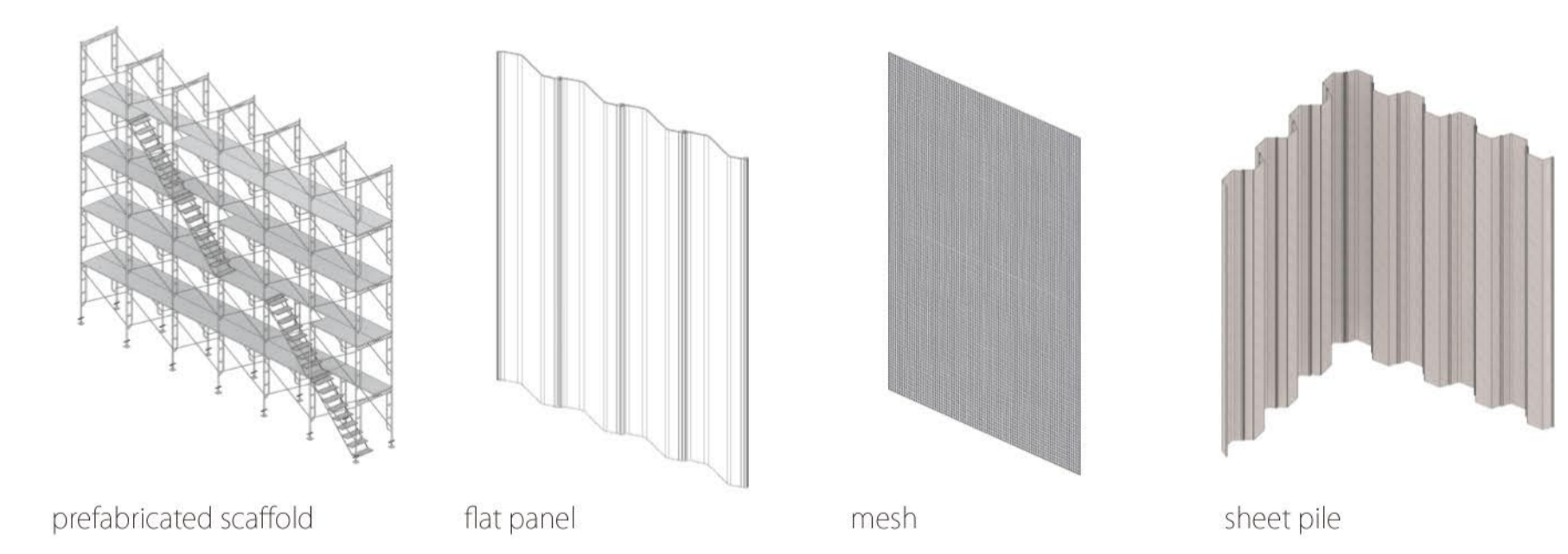




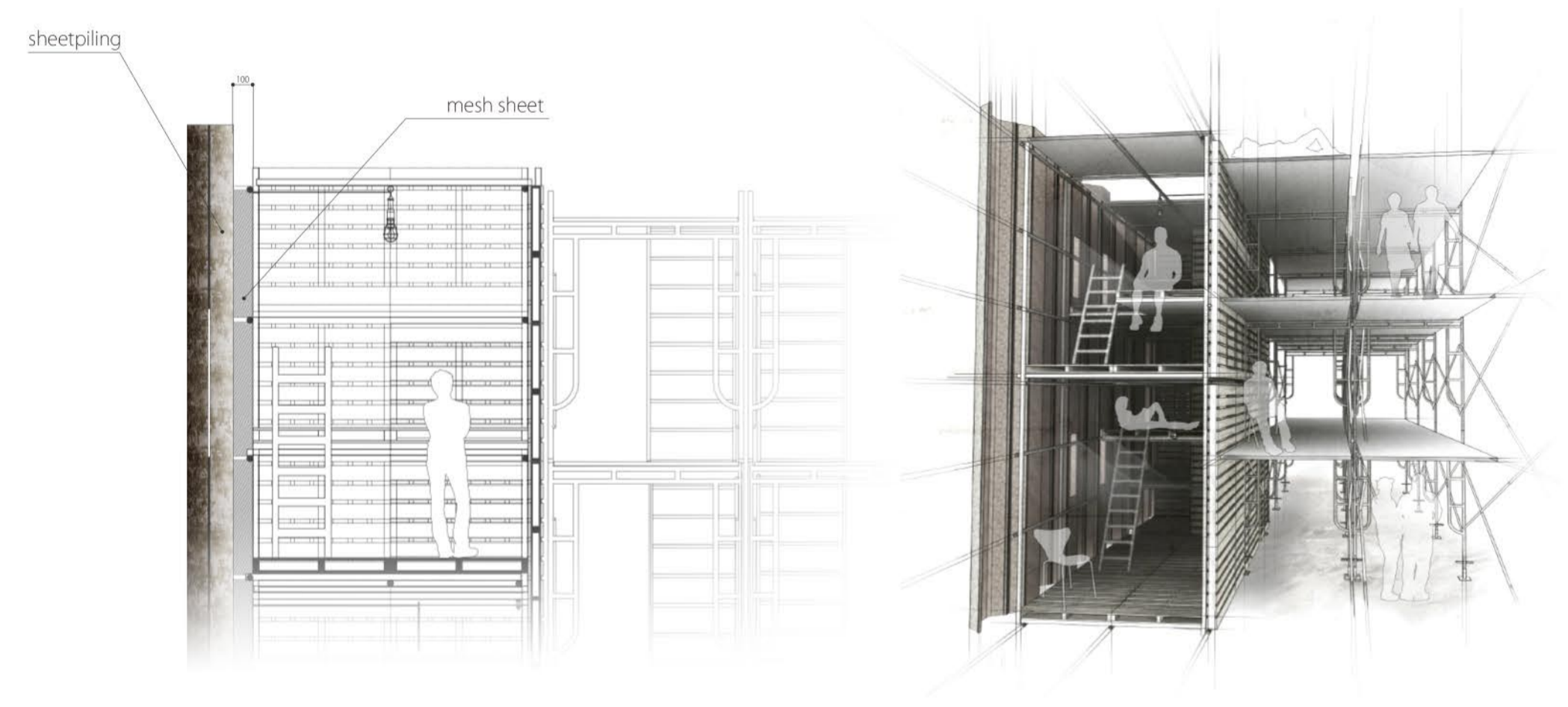
the state of Klongtoey slum in Bangkok, Thailand



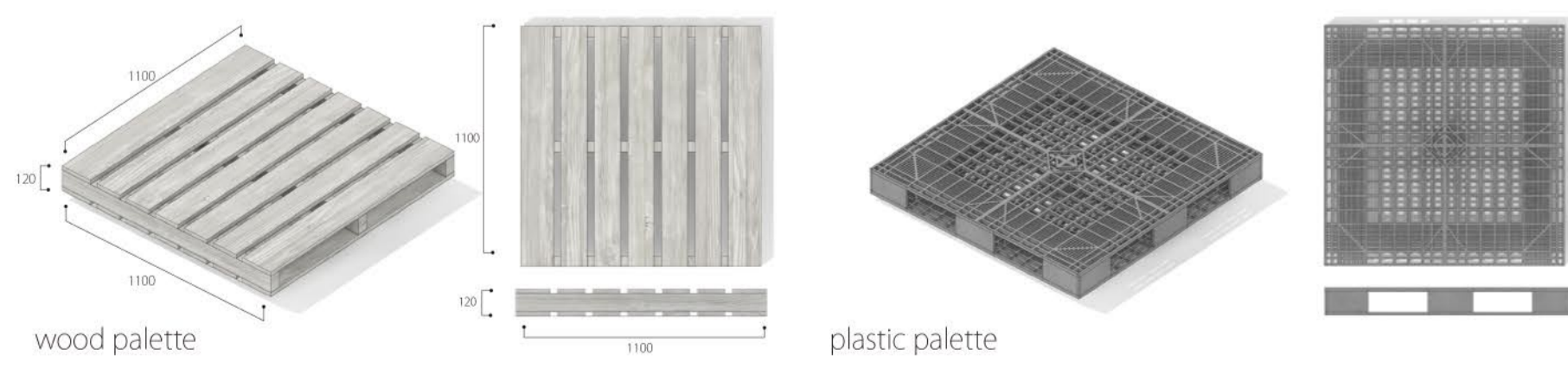
ordinary construction materials (lease)



ordinary construction materials (lease)



recycle materials from bangkok port



flexible housing units by self build system

- <Klong Toei slum in bangkok, Thai>
- population : 80000
- Informal sector is their main job. (day worker ,street stall ,bike taxi etc)
- marshy areas of delta (farm products are not harvested by the soil containing salt )
- insufficient infrastructure



flexible housing units by self build system

